

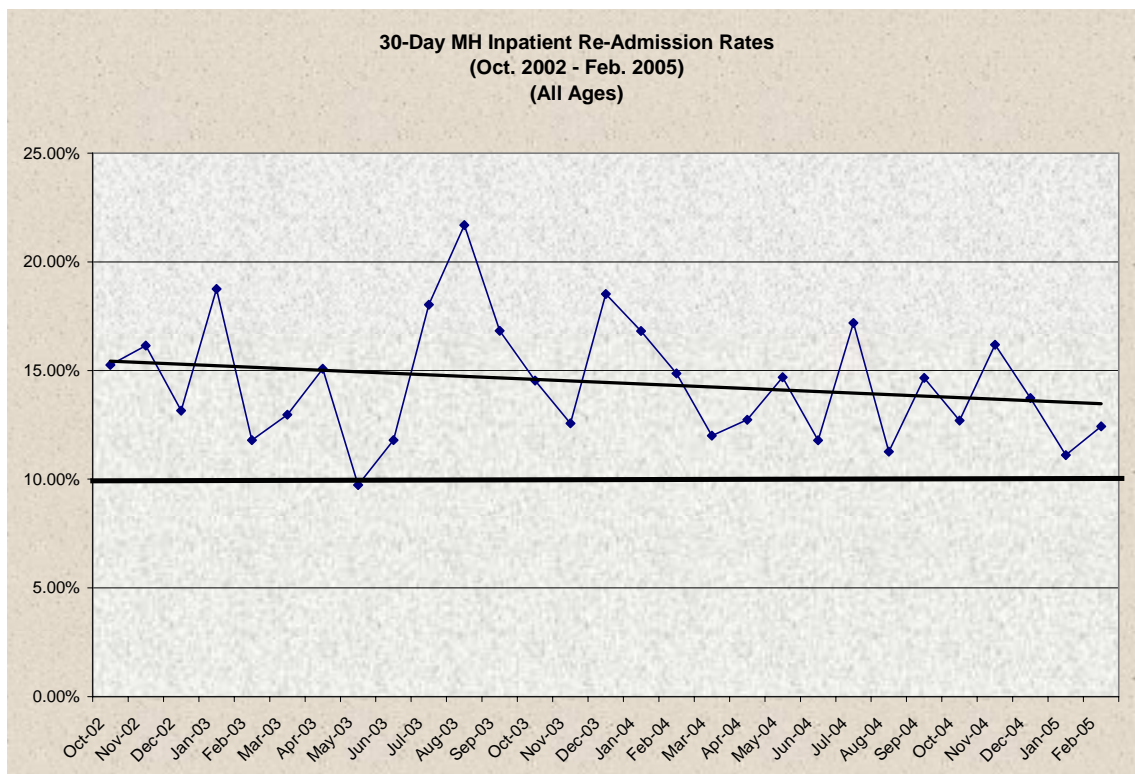
Q1 Spotlight

June 2005

Two closely related Quality Improvement activities undertaken by CBHNP and throughout the HealthChoices program statewide are:

1. To decrease the rate of re-admissions within 30 days to Mental Health Inpatient treatment, and
2. To increase the rate of follow-up appointments that are kept within 7 and 30 days of discharge from Mental Health Inpatient treatment.

These are two very important measures for both plan performance and for the Members who are affected. They are closely related because research has shown that proper and timely follow-up care will work to decrease the rate of needed re-admissions. As seen in the graph below, readmission rates have been decreasing for CBHNP Members. The ideal or “Gold Standard” of care of 10% as defined by OMHSAS is what we hope to achieve and is represented by the bold control line on the graph.



Improvements to the rate of follow-up after a hospital stay have been targeted and can be seen in the following graph. The bold control line represents the most recent national average for Medicaid plans.

